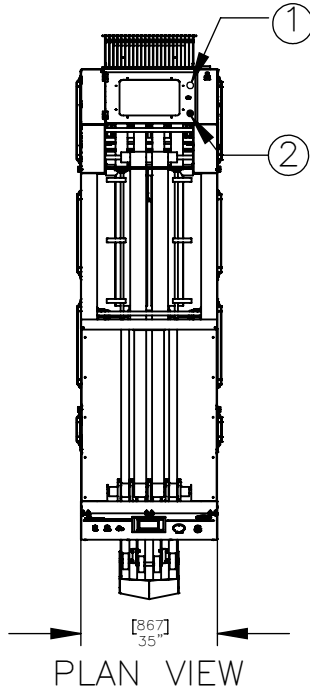


# Precision Series Small Piece Folder

## Return to Feed - SPFRF

G.A. Braun, Inc. PO Box 3029 Syracuse, NY 13220-3029

(315) 475-3123 • (800) 432-7286



### 1. ELECTRICAL SPECIFICATIONS

3-PHASE SUPPLY VOLTAGE/FREQUENCY	208/3/60	240/3/60	480/3/60
Machine Fused Disconnect (AMPS)	20	20	15
Machine Full Load Amps (FLA) ALL OPTIONS	7	7	4
MAIN MOTOR	1 HP		
MINIMUM BRANCH CIRCUIT REQUIREMENTS			
Fuse or Circuit Breaker (Amps) [See Notes Below]	20	20	15

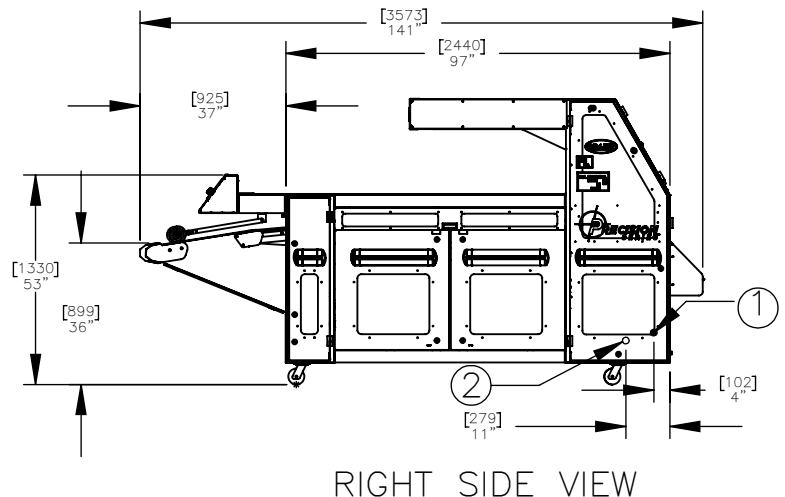
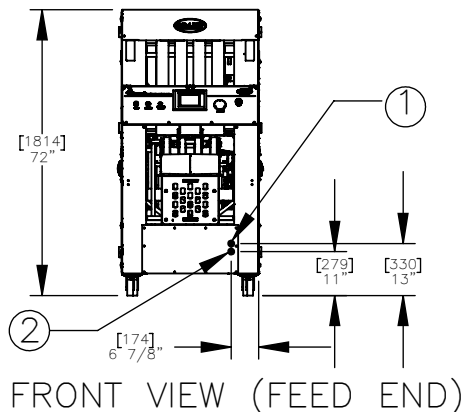
- **Grounding:** Ground machine to an earth ground (zero potential) per National Electric Code (NEC) section 250 and any applicable local codes. Use a ground wire sized in accordance with NEC Table 250.122. Do not rely on conduit, machine anchorage, etc. Connect the ground wire between the ground lug on the incoming power junction box on the machine and the external disconnect box or other location as required to assure a reliable earth ground.
- **ESD:** Machine has ESD sensitive controls, failure to provide a reliable earth ground may result in equipment damage.
- **Branch Circuit Protection:** Size external fuses or circuit breakers per the recommended minimum branch circuit requirements listed above. Installation of this branch circuit must be in accordance with the National Electric Code (NEC) and any applicable local codes.
  - o Use only Dual Element (Time-Delay) fuses FRN (up to 250V), FRS (250 to 600V).
  - o If an inverse time circuit breaker is to be used instead of fuses, it should have the same characteristics as FRN/FRS type fuses.
- **Wire Sizing:** Wire shall be sized in accordance with the National Electric Code and any applicable local codes. The required wire size will vary with the length of the wire run as well as any specific local codes. The use of THHN type copper supply conductors with a minimum of 90 deg C insulation is strongly recommended.
  - **Plug:** A 3-Pole 4 wire grounding Twist-lock plug is provided

### 2. PNEUMATIC SPECIFICATIONS

1/4" NPT, 7.5 CFM FREE AIR AT 80 PSIG, PROVIDE 5 FT FLEXIBLE CONNECTION WITH QUICK DISCONNECT

### SHIPPING INFORMATION

OPENING TO RECEIVE UNIT	36" X 74" H	915mm x 1880mm H
OVERALL DIMENSIONS	141" X 35" X 72" H	3573mm x 867mm x 1812mm H
SHIPPING DIMENSIONS	148" X 40" X 76" H	3760mm x 1020mm x 1930 mm H
SHIPPING WEIGHT	1700 LBS	780 kg



DIMENSIONS SHOWN ARE IN INCHES & MILLIMETERS  
SPECIFICATIONS SUBJECT TO CHANGE WITHOUT NOTICE